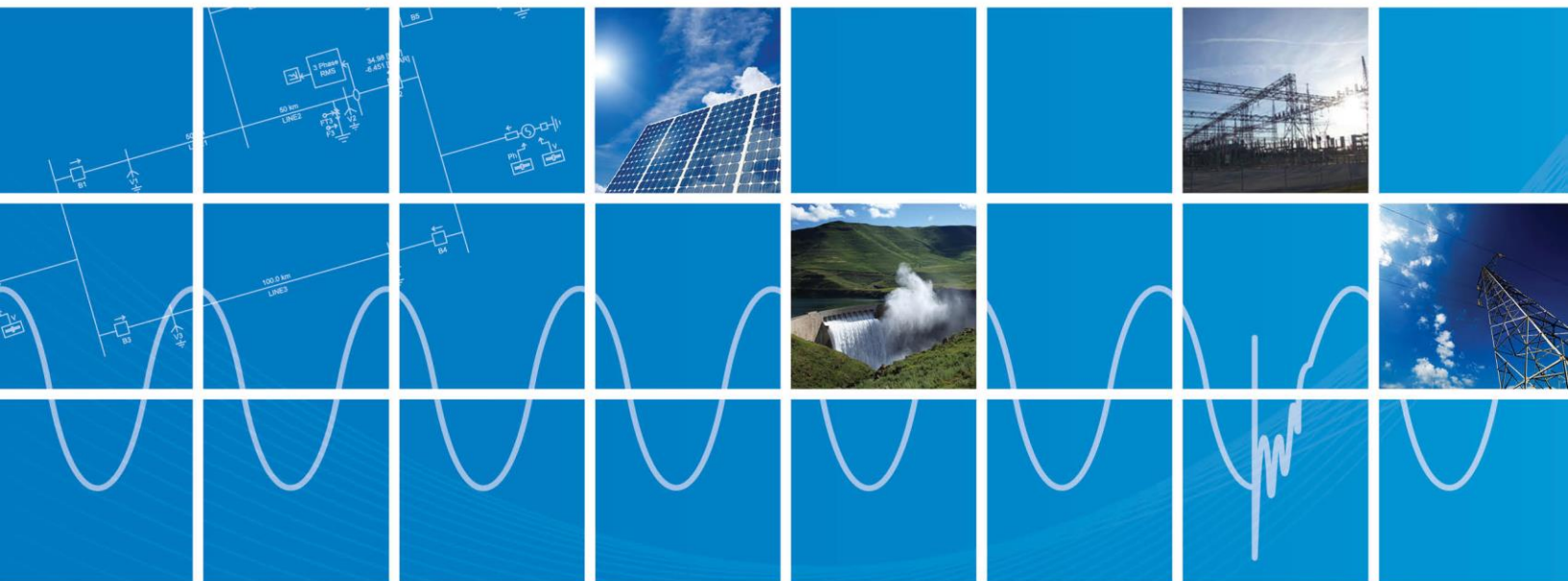


Resolving PRSIM Issues

October 9, 2021
Revision 1



Contents

1.	INTRODUCTION.....	1
1.1	OVERVIEW.....	1
1.2	RELATED SUPPORT DOCUMENTS	1
2.	PRSIM USAGE ISSUES	2
2.1	RECEIVING A "COORDINATES SHOULD NOT EXCEED THE CANVAS SIZE..." ERROR MESSAGE	2
	APPENDIX A HOW TO FIND THE RESULTS FILES.....	4

1. Introduction

1.1 Overview

This manual presents known issues and solutions related to using PRSIM. It is intended to be a continuously developing diagnostic tool as licensing evolves. If you encounter any issues that are not covered herein, please forward the details to our Support Desk (support@mhi.com).

The information in this manual is applicable to PRSIM v1.0.0, and covers the following topics:

- Section 2 – PRSIM Usage Issues
- Appendix A – How to Find the Results Files

1.2 Related Support Documents

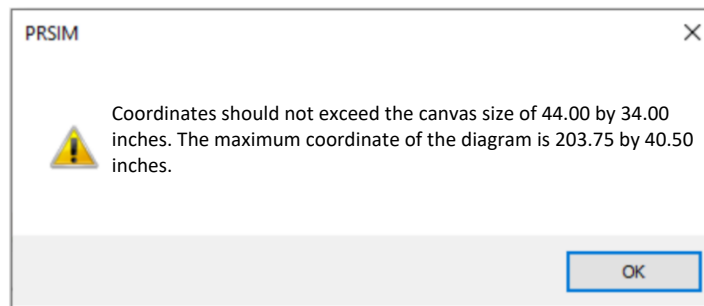
Refer to this [article](#) for other, related, support documents.

2. PRSIM Usage Issues

2.1 Receiving a “Coordinates should not exceed the canvas size...” Error Message

Problem

The following error displays:



Cause

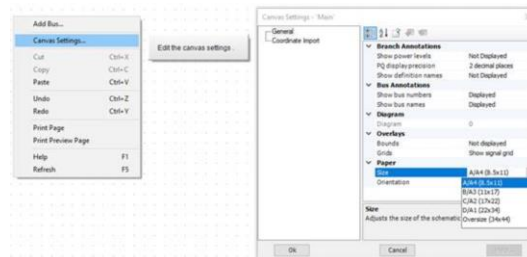
The PRSIM canvas size is limited to be consistent with the PSCAD canvas size, to maintain compatibility between PRSIM output and PSCAD input.

Solution (1) Select the Appropriate Canvas Size in Relation to the PSCAD Version

- Select the PSCAD target version, located on the “Home” tab:



- Select the corresponding canvas size:



Solution (2) Move Some of the System into a Subpage

Select part of your system, and push it into a subpage. This will free up some space to help display the rest of your system.

Continued...

Solution (3) Move Some of the System into a Schematic

Create multiple schematics for different parts of the network. Using this option results in multiple PSCAD cases that must be linked properly later on.

Solution (4) Resize the System on the Loadflow Platform Canvas

If the size of the networks allows, users may avoid relying on the subpage or schematic options by redistributing the system components on the PSSE or PowerFactory DIgSILENT canvas. This will allow reducing the required space for the case being loaded into PRSIM.

Appendix A How to Find the Results Files

When PRSIM is used to convert third-party data files to PSCAD, the results of the conversion will be logged. This [article](#) provides information on how to find these files.

DOCUMENT TRACKING

Rev.	Description	Date
0	Initial	04/Dec/2020
1	Added Appendix A Update to Section 1.1	09/Oct/2021